

# Ellwood Community Primary School



## Bulletin - January 15th 2021

Thank you for all your support. By working together, we will all be able to work through this challenging time and will continue to achieve the very best for all of our children. Remember we are here to support you and if you have questions, challenges or lovely moments that you want to share and celebrate with us, then please send them through the class email. We would love to see them. We hope you all have a wonderful and relaxing weekend and we look forward to seeing what we can achieve together next week. Stay safe.

### Reading Books

We still have a number of reading books that were requested and have not yet been collected. Please collect before the next changeover date of Monday 25th January.

Reading books may be changed on Monday 25th January. Please contact the class teacher using the year group email address if you would like to have some new books. Please bring back the books that have already been read, so that we can quarantine them.

Thank you for continuing to support reading at home.

### Vouchers/Free School Meals

The government has been very slow to reactivate the voucher system and we are still waiting for the voucher system portal to go live. We will be able to offer vouchers as soon as we are able. We are hoping this will be possible next week.

Many thanks for your patience and support with this.

### COVID UPDATE

We are pleased to report there have been no positive cases within school in the last few weeks. One staff member unfortunately had COVID over the Christmas holidays but seems to have made a fantastic recovery, so that is great news. The cases locally have been increasing over the last few weeks, so please remain vigilant. Only send your child to school if you have no other option. Parents who are not active critical workers should care for their child/ren' s safely at home.

## Home Learning

Well done to all those making good progress with their home learning. We appreciate it is very difficult for a lot of parents but we are really impressed with your efforts. It is essential that the children complete the work set on the learning platform, as this work covers lessons and objectives which would normally be covered in school. The tasks and delivery of the lessons has had to be adapted to work successfully with remote learning. However, the children need to keep up with the content as best they can, so they can complete the sequence of lessons. During this partial school closure there is more new learning to complete.

Please remember if you have any problems with the work being set, contact the teacher using the year group email address.

## Remote Learning Offer

We are aware that local schools are delivering their remote learning differently. Please do not compare our school to other schools locally and nationally. Each school sets provision based on the needs of the pupils, school size, number of staff, logistics and capacity within the school. Other schools may choose to do this differently but at Ellwood Primary we have chosen to deliver learning in a certain way based on research, good practise, lots of discussion and consideration. One example is live lessons. These can be advantageous but also disadvantageous too. Live lessons work much better in secondary schools with older children but do not necessarily work well with younger children. Some of the disadvantages being: a parent would need to be present at all times for safeguarding reasons, individual children may not be able to keep up with the pace of learning, it would reduce flexibility of when the work had to be carried out and staff cannot carry out live lessons whilst also looking after critical keyworker children in school of different ages.

We are also aware of technological issues with delivering live lessons due to the broadband being intermittent in certain areas.

As a school we need to deliver learning which has maximum capacity to encourage as many children as possible, with a degree of flexibility for parents. We feel that the remote learning we offer and have in place, is best for our children's needs.

Our Calibrae learning platform is very simple for pupils and parents to find everything they need in one place. We have been overwhelmed with the quality of work and engagement. We have included a few examples of learning activities that have taken place at home.

## Harry B (Year 5) - sent in a fantastic poster about Earth



## Harry P (Year 5) - sent in amazing fact file about Earth.

### PLANET EARTH FACT FILE

- It has one moon
- It orbits the sun in 365 days
- 71% of its surface is covered in water, this is why it is called the Blue planet!



Earth is the third planet from the sun

Earth is not a perfect sphere!

Antarctica is the coldest place on Earth!



shutterstock · 1129245656


Earth is the only planet known to have plants and animals living on it.

Earth has day and night because half of the earth is lit by the sun while the other half is in the dark.



Frankie J (Year 5) sent in a great video presentation of her Space Project.

Page 2 - Add page title



# EARTH

Earth is where we live and we will always live. Earth is made up of all different colours. The colours of the earth from space is blue and green.




**DID YOU KNOW?**  
**THAT EARTH SPINS AT 1000 MILES PER HOUR .IT TAKES 24 HOURS TO COMPLETE A FULL ROTATION.**

Page 3


3

Page 3 - Add page title



# SPACE

Space is 62 miles from Earth.  
The first person to step on the moon (Neil Armstrong's) feet are still visible on the moon



36



April D (Year 6) - Sent in a great poster about Reptiles as part of their Animal Science topic.

# Reptiles

## Snakes

There are over 3000 kinds of snakes in the world. Snakes, like other reptiles are cold blooded. They cannot bite their food so in order to eat large prey, they must wring their jaw to swallow food whole.



## Turtles + tortoises

Turtles spend most of their lives in water. They are adapted for aquatic life, with webbed feet or flippers and a streamline body.

Tortoises are land animals. Their feet are round and stubby, adapted for walking on land.

Turtle →



Baby turtle



Tortoise →



Comparison of turtle & tortoise

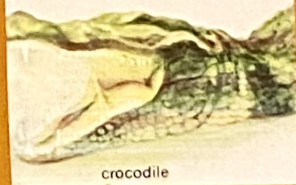


Tortoise Turtle

## Crocodiles

Crocodiles are very fast swimmers, which helps them catch their prey. They can swim up to 20 mph (32 kph) and can hold their breath underwater for around one hour. Crocodiles are meat eaters, they have 24 sharp teeth which are used for the killing of birds, fish, mammals and even smaller crocs.

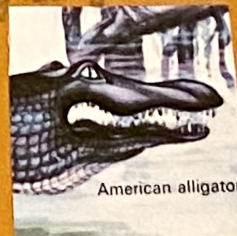
Below: Crocodiles and snakes are reptiles. These animals are cold-blooded and have dry skins. Many lay waterproof eggs.



crocodile

## Alligators

Alligators are much like crocodiles except they come from two different families.



American alligator

